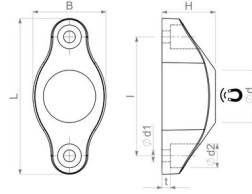


## Magnetic catches

### Magnetic door stop with rubber buffer, black



| Article number | L mm | l mm | B mm | d mm | d1 mm | d2 mm | H mm | t mm | Adhesive force* N | Weight g | Temperature °C |
|----------------|------|------|------|------|-------|-------|------|------|-------------------|----------|----------------|
| MBS65x30x23Nd  | 65   | 50   | 30   | 22   | 5     | 10    | 23   | 3.5  | 60                | 22       | 60             |

This high-quality magnetic door stop with rubber buffer reliably holds doors and flaps open. The rubberised magnetic system ensures good impact absorption and protects against scratches. Attach the stop to the back of a door or directly to the wall and provide a suitable counterpart. With an overall length of 65 mm and a drill hole distance of 50 mm, this door stop is the ideal solution.

As an alternative to the standard, we also offer individual solutions:

" Other colours possible

\* The forces have been determined at room temperature on a polished plate made of steel (S235JR according to DIN 10 025) with a thickness of 10 mm (1kg~10N). A deviation of up to -10% from the specified value is possible in exceptional cases. In general, the value is exceeded. The type of application (installation situation, temperatures, counter anchors, etc.) sometimes influence the forces enormously. The values given are for orientation purposes. Let our experts advise you.